

# HC3 520AJ

ARTICULATING BOOM LIFT

BOOM LIFT

PRELIMINARY  
VERSION



## STANDARD SPECIFICATIONS

### Performance

Platform Height	16 m / 52-ft 6-in
Horizontal Outreach	10 m / 32-ft 9.6-in
Below Ground Reach	0.41 m / 1-ft 4.1-in
Swing	355 Degrees Non-Continuous
Platform Capacity - Restricted	🧑🧑🧑 340 kg / 454 kg / 780-lb/1,000-lb
Platform Capacity - Unrestricted	🧑🧑 300 kg / 660-lb
Platform Rotator	173 Degrees Hydraulic
Jib Length	1.24 m (4-ft 1-in)
Jib Range of Articulation	145 Degrees (+76, -69)
Weight*	8,618 kg / 19,000-lb
Max. Ground Bearing Pressure	7.21 kg/cm <sup>2</sup> / 102.6 psi
Drive Speed	6.84 kph / 4.25 mph
Gradeability	45%
Tilt Cut Out	5 Degrees
Turning Radius - Inside:	2.06 m (6-ft 8.9-in)
Turning Radius - Outside:	4.78 m (15-ft 8.0-in)

\*Certain options or country standards increase weight

### Engine

Diesel Engine – Deutz D2.9L4 Stage V	36.4 kW / 48.8 hp
Fuel Tank Capacity	60.6 L / 16.0 gal

### Tires

Standard	33x12-20 low profile, SOLID, non- marking
----------	---

### Hydraulic System

Capacity	65.5 L / 17.3 gal
----------	-------------------

## STANDARD FEATURES

- 1.24-m (4 ft 1 in.) Articulating Jib
- Platform 0.76-m x 1.83-m (30-in x 72-in.) side entry
- 180 Degree Hydraulic Platform Rotator
- Platform Console Machine Status<sup>1</sup>
- 110V-AC Receptacle in the Platform
- 5 Degree Tilt Alarm/ Indicator Light
- Swing Out Engine Module
- Proportional controls
- Dura Tough turntable hoods
- 12V-DC Auxiliary Power
- Hourmeter
- Interactive Display at Ground Controls Control
- ADE® System Lifting/Tie
- Down Lugs Horn
- Four-Wheel Hydrostatic Drive
- Oscillating Axle
- Cast Aluminum Control Box
- Motion Alarm
- Platform power USB
- Load Sensing System
- SkyGuard SkyLine™

1. Provides indicator lights at platform control console for system distress, low fuel, 5 degree tilt light, and foot switch status.

2. Includes battery blanket, hydraulic tank heater and block heater.

3. Includes boom wipers, cylinder bellows and console cover.

4. Includes platform work lights, head and tail lights, amber beacon.

Note: Some options may increase lead time, and some option combinations may not be available.

Additional accessories and options available via JLG Aftermarket.

### KEY SPECS

**Platform Height**  
16 m / 52-ft 6-in

**Horizontal Outreach**  
10 m / 32-ft 9.6-in

**Tilt**  
5 Degrees

**Platform Capacity**  
Restricted - 454 kg / 1,000-lb 🧑🧑🧑  
Unrestricted - 300 kg / 660-lb 🧑🧑

### KEY FEATURES

- Maximum productivity- 3 people allowed into the basket in 3 working zones at the same time from 300 kg. un-restricted up to 454 kg restricted.
- Enhanced Platform Control- LCD screen provides better visibility in the direct sunlight and an automatic selection of the capacity zone based on the load in the basket.
- No weight calibration with the new Load sensing system.
- Chassis tilt indicator of 5 degrees with light alarm.

## ACCESSORIES & OPTIONS

- Skyguard SkyBar
- Skyguard SkyEye
- Cold Weather Start Kit<sup>2</sup>
- 4000W 50Hz GEN (DEUTZ Stage V)
- Hydraulic Oil Cooler
- Tires - 33/1550 x 16.5 FF
- Tires - 33 x 12 D610 FF
- 0.76 m x 1.22 m drop bar side entry platform
- 0.76 m x 1.22 m drop bar platform
- 0.76 m x 1.52 m swing gate or drop bar platform
- 0.92 m x 1.83 m drop bar platform
- 0.76 m x 0.92 m drop bar platform
- Flashing Amber Beacon
- Light Package<sup>4</sup>
- Special Hydraulic Oils
- ClearSky CANBUS
- Pipe Rack
- Hostile Package<sup>3</sup>
- Beacon Alert (Blue & Red)
- 13 mm Airline to platform

# HC3 520AJ

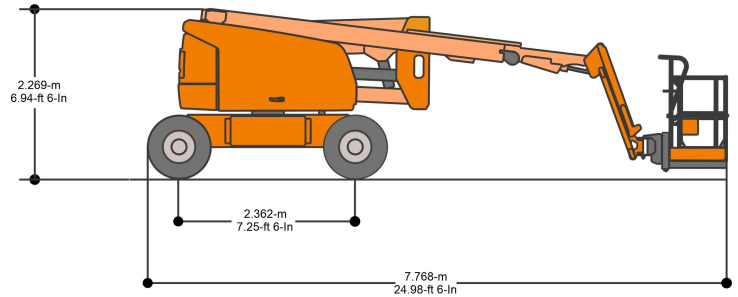
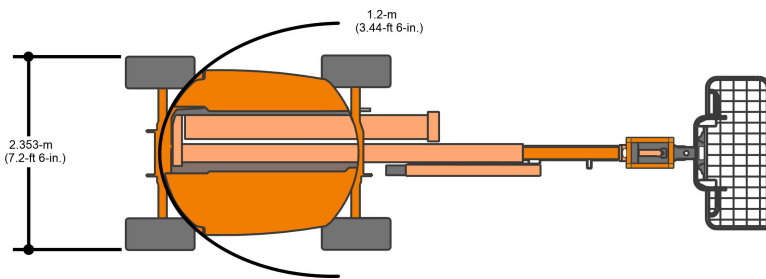
BOOM LIFT

ARTICULATING BOOM LIFT

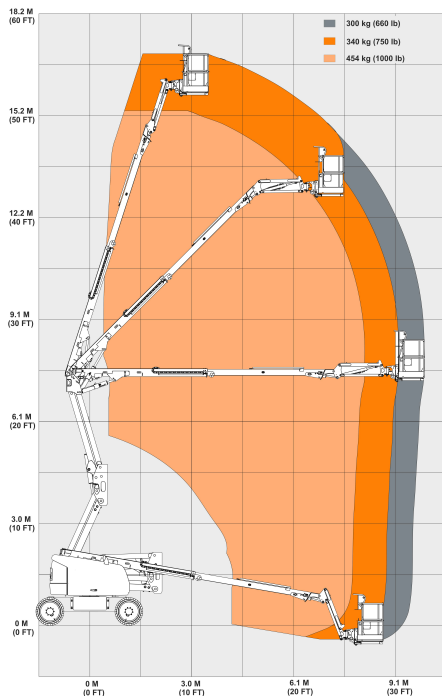


## DIMENSIONS

All dimensions are approximate



## REACH DIAGRAM



## IMPORTANT

JLG is continually researching and developing products and reserves the right to make modifications without prior notice. All data in this document is indicative. Certain options or country standards will increase weight. Specifications may change to meet country standards or with the addition of optional equipment.

Due to continuous product improvements, JLG Industries reserves the right to make specification and/or equipment changes without prior notification.



### JLG EMEA BV

Polaris Avenue 63  
2132 JH Hoofddorp  
The Netherlands  
Tel.: +31 (0)23 565 5665  
[www.jlg.com](http://www.jlg.com)

An Oshkosh Corporation Company