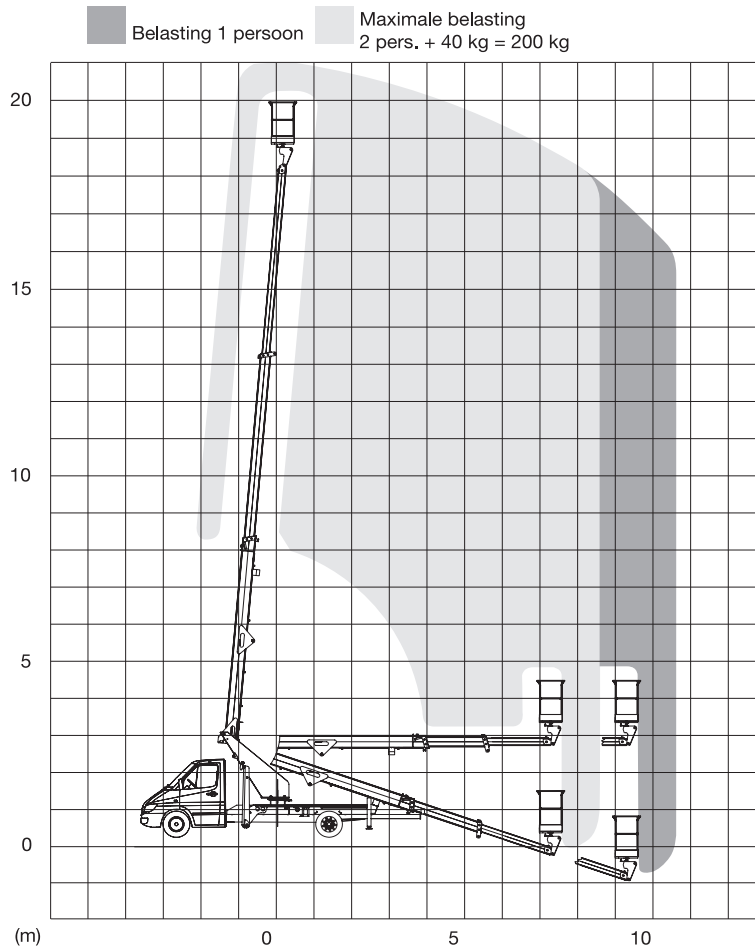


**D I J A G R A M**

**S P E C I F I K A C I J E**

RADNA VISINA (MAX.)	21,00 M	MASA STROJA	3.400 KG
VISINA PLATFORME (MAX.)	18,90 M	OKRETNI KRUG	3,15 M
HORIZONTALNI DOSEG (MAX.)	10,00 M	POGON	DIESEL
NOSIVOST (MAX.)	200 KG	ROTIRAJUĆA PLATFORMA	180°
DIMENZIJE PLATFORME (DxŠ)	1,40 × 0,60 M	OPTEREĆENJE VJETROM (MAX.)	12,5 M/SEC
TRANSPORTNE DIMENZIJE (DxŠxV)	7,77 × 2,10 × 2,85 M		