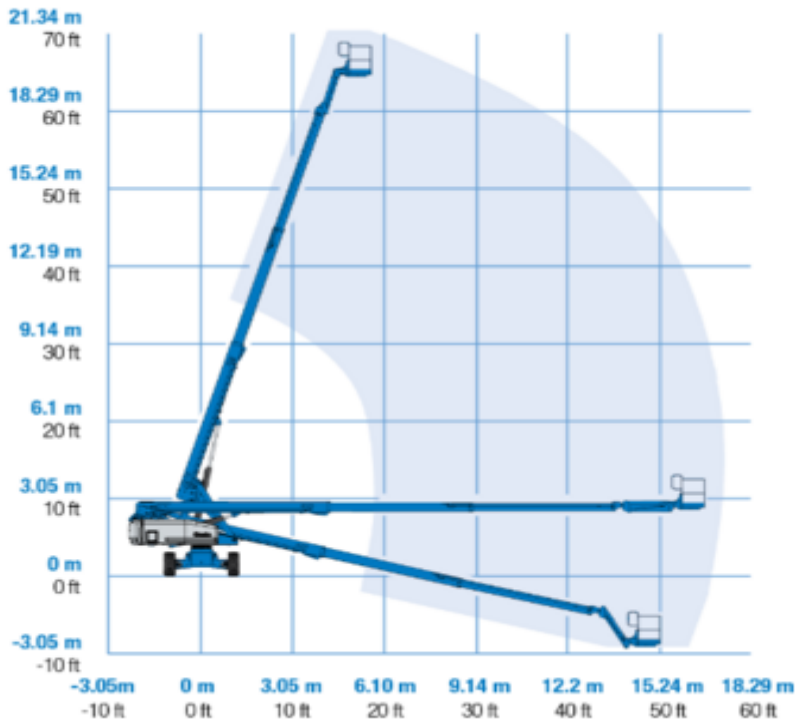




Genie S65TRAX Crawler lift

Diesel

S[®]-65 and S[®]-65 Trax



Rental code

DCT220

Machine rental classification

↕ 22

17

KG 227

Safety requirements



Machine specifications

| | |
|------------------------------|-------------------|
| Lifting propulsion | Diesel |
| Driving propulsion | Diesel |
| Max. working height (m) | 21.86 |
| Max. platform height (m) | 19.86 |
| Max. working outreach (m) | 17.1 |
| Max. platform outreach (m) | 17.1 |
| Max. lifting capacity (kg) | 227 |
| Machine weight (kg) | 12229 |
| Transport dimensions (LxWxH) | 9.5 x 2.59 x 2.77 |

| | |
|---------------------------|-------------|
| Platform dimensions (LxW) | 0.91 x 2.44 |
| Terrain & tires | Outdoor |
| Consumption | 8.2 |
| CO2 emission per hour | 21.894 |



Every effort has been made to present complete and accurate machine information. Riwal does not provide assurance or warranty of the information, and accepts no liability for potential damages. This document is intended as a selection guide. Please consult the machine inspection documentation accessible through Riwal for certified machine specifications.

Riwal Corporate
+31 88 618 18 88
info@riwal.com