

Technical sheet :

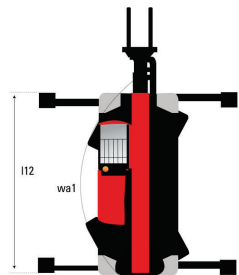
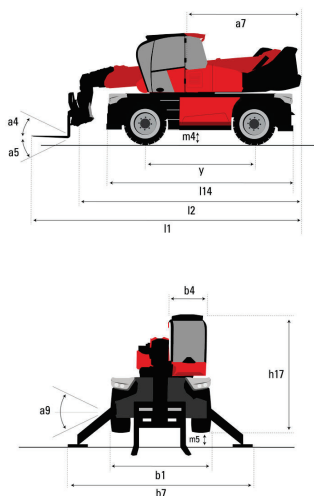
# **MRT 3570**

## **VISION +**

---



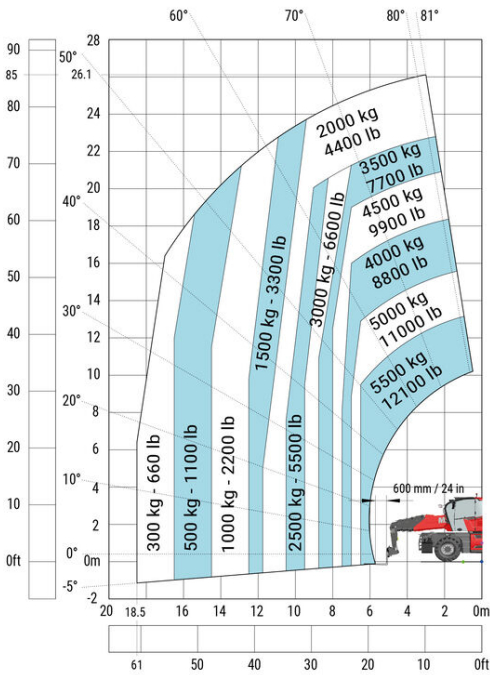
Capacities			Metric	Imperial
Max. capacity			7000 kg	15,400 lbs
Max. lifting height			34.70 m	113 ft 10 in
Max. outreach	r1		28 m	91 ft 10 in
Weight and dimensions				
Overall width	b1		2.50 m	8 ft 2 in
Overall height	h17		3.26 m	10 ft 8 in
Overall cab width	b4		0.96 m	38 in
Ground clearance	m4		0.36 m	14 in
Wheelbase	y		3.75 m	12 ft 4 in
Tilt-up angle	a4		11 °	11 °
Tilt-down angle	a5		113 °	113 °
Turret rotation			360 °	360 °
Overall weight			23800 kg	52,470 lbs
Wheels				
Standard tires			17,5_R25	17,5_R25
Drive wheels (front / rear)			2 / 2	2 / 2
Steering mode			2 wheel steer, 4 wheel steer, Crab mode	2 wheel steer, 4 wheel steer, Crab mode
Stabilisers				
Stabs Type			Telescopic Triplex	Telescopic Triplex
Controls			Individual or Simultaneous	Individual or Simultaneous
Engine				
Engine brand			Yanmar	Yanmar
Engine norm			Stage V / Tier 4	Stage V / Tier 4
Engine model			4TN107FTT-6SMU2	4TN107FTT-6SMU2
I.C. Engine power rating / Power (kW)			211 Hp / 155 kW	211 Hp / 155 kW
Max. torque / Engine rotation (min)			805 Nm @ 1500 rpm	544 ft-lbs @ 1500 rpm
Number of cylinders - Capacity of cylinders			4 - 4567 cm³	4 - 279 in³
Engine cooling system			Water cooled	Water cooled
Number of batteries / Battery / Batteries capacity			2 x 12 V / 120 Ah	2 x 12 V / 120 Ah
Battery starting current			(EN)850 A	(EN)850 A
Transmission				
Transmission type			Hydrostatic with CVT	Hydrostatic with CVT
Gearbox			Speedshift	Speedshift
Max. travel speed			40 km/h	25 mph
Parking brake			Automatic negative parking brake	Automatic negative parking brake
Service brake			Oil-immersed multi-discs braking on front & rear axles	Oil-immersed multi-discs braking on front & rear axles
Hydraulics				
Hydraulic pump type			Load sensing pump	Load sensing pump
Hydraulic flow			185 l/min	49 gal/min
Hydraulic Pressure			350 Bar	5076 PSI
Tank capacities				
Engine oil			13 l	3 US gal
Hydraulic oil			300 l	79 US gal
Fuel tank			320 l	85 US gal
Diesel Exhaust fluid (AdBlue® type)			24 l	6 US gal
Miscellaneous				
Steering wheels (front / rear)			2 / 2	2 / 2
Controls			2 Joysticks	2 Joysticks
Safety cab homologation			ROPS - FOPS cab (level 2)	ROPS - FOPS cab (level 2)
Attachment recognition system (E-Reco)			Standard	Standard



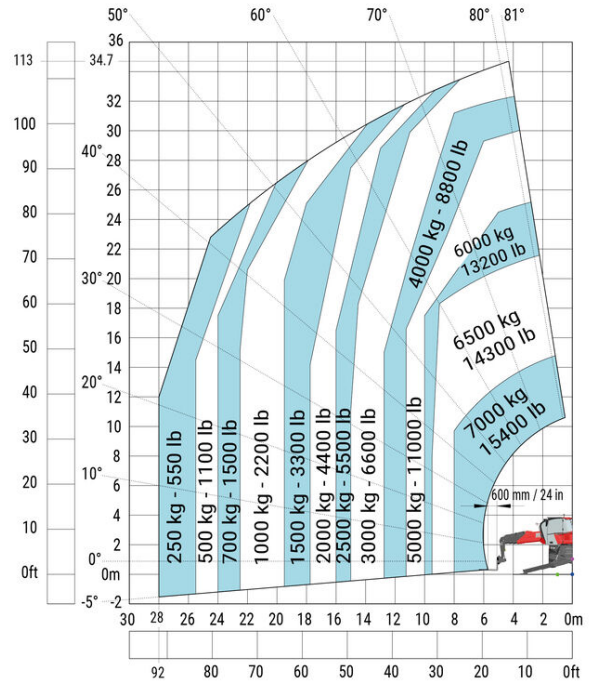
## MRT 3570 - Dimensional drawing

Other data		Imperial	Metric
Overall length (with forks)	l1	33 ft	10.06 m
Length to face of forks	l2	29 ft 1 in	8.86 m
Length of frame	l14	22 ft 5 in	6.82 m
Wheelbase	y	12 ft 4 in	3.75 m
Ground clearance	m4	14 in	0.36 m
Counterweight offset (turret at 90°)	a7	12 ft 3 in	3.74 m
Tilt-up angle	a4	11 °	11 °
Tilt-down angle	a5	113 °	113 °
Overall length at stabilizers	l12	21 ft 4 in	6.49 m
External turning radius (over tires)	Wa1	16 ft 1 in	4.91 m
Overall width	b1	8 ft 2 in	2.50 m
Overall width with stabilizers extended	b7	24 ft 3 in	7.40 m
Overall cab width	b4	38 in	0.96 m
Overall height	h17	10 ft 8 in	3.26 m
Frame leveling corrector	a9	+/- 8 °	+/- 8 °
Ground clearance under front tires on stabilizers	m5	1 ft 6 in	0.45 m

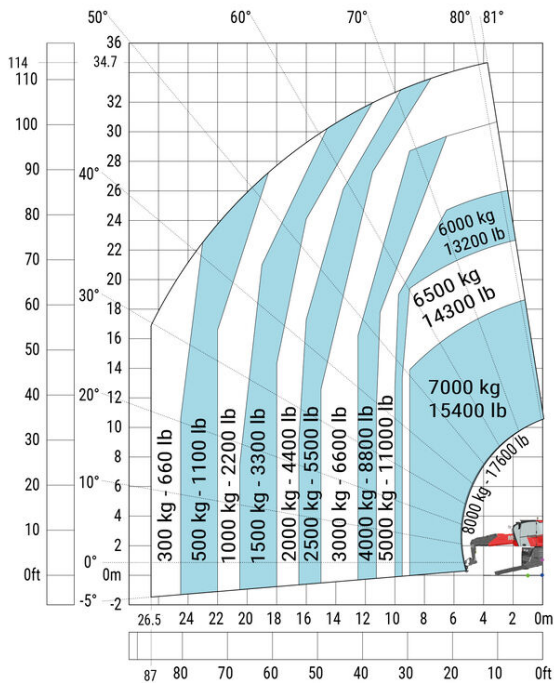
Machine on tires with forks



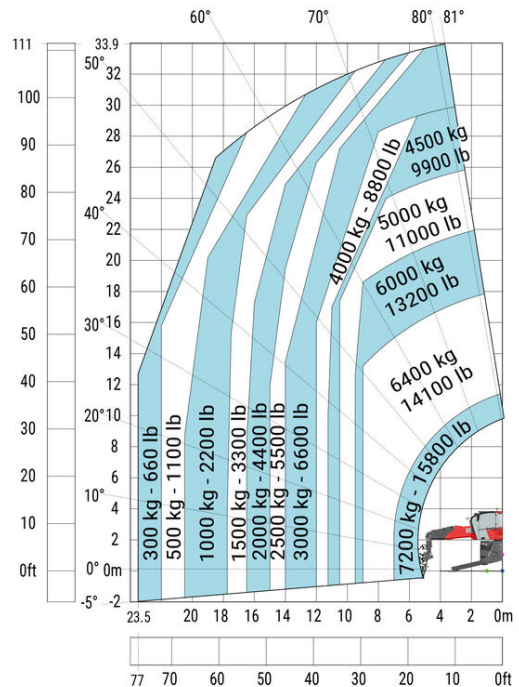
Machine on lowered stabilizers with forks



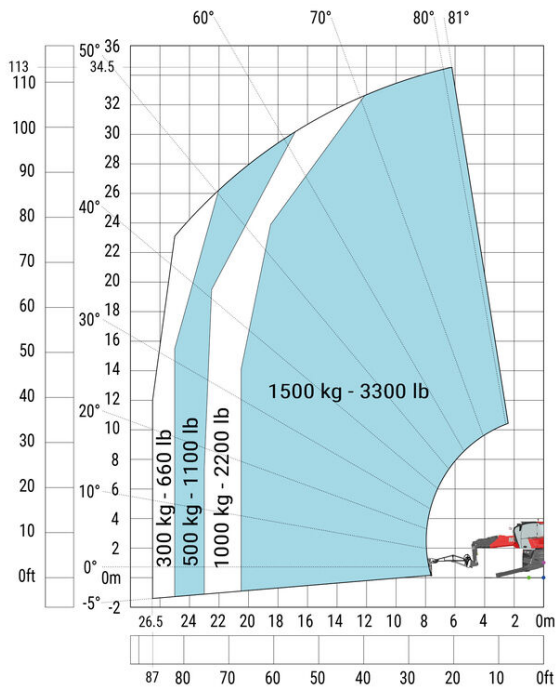
Machine on lowered stabilizers with hook 17,600 lbs



Machine on lowered stabilizers with winch 15,800 lbs



## Machine on lowered stabilizers with 3,300 lb jib



Manitou North America, LLC  
P.O. Box 179 - West Bend, WI 53095  
Tel: 262-334-9461 [www.manitou.com](http://www.manitou.com)



This brochure describes versions and configuration options for Manitou products which may be fitted with different equipment. The equipment described in this brochure may be standard, optional or not available depending on version. Manitou reserves the right to change the specifications shown and described at any time and without prior warning. The manufacturer is not liable for the specifications given. For more information, contact your Manitou dealer. Non-contractual document. Product descriptions may differ from actual products. List of specifications is not comprehensive. The logos and visual identity of the company are the property of Manitou and may not be used without authorisation. All rights reserved. The photos and diagrams contained in this brochure are provided for information only.

MANITOU BF SA - Limited company with board of directors - Share capital: 39,668,399 euros - 857 802 508 RCS Nantes