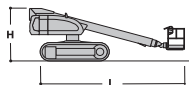
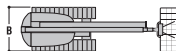
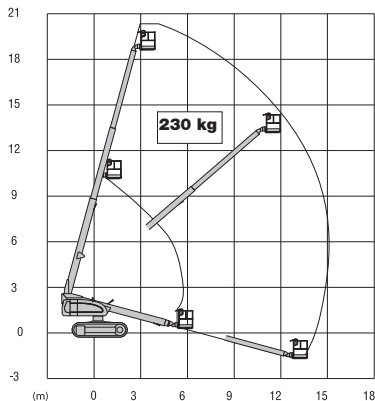


DIESEL RUPSTELESCOOPHOOGWERKER - DCT200G (201TDCA)

JLG-600SCG

W E R K B E R E I K**S P E C I F I C A T I E S**

WERKHOOGTE (MAX.)	20.36 M	HEFVERMOGEN (MAX.)	230 KG
HORIZONTAAL BEREIK (MAX.)	13.20 M	MACHINEGEWICHT	10.230 KG
TRANSPORTAFMETINGEN (LxBxH)	8.51 x 2.49 x 2.56 M	AANDRIJVING	DIESEL
PLATFORMAFMETINGEN (LxB)	1.83 x 0.91 M		

OPMERKING: VERSCHILLENDE BREEDTES WERKBAK MOGELIJK 1.83 M / 2.44 M, AGGREGAAT