

Specifications

	3.5T GWV Mercedes Sprinter	3.5T GWV Iveco Daily	5.2T GWV Iveco Daily
Working height	24.2m	24.2m	24.2m
Platform height	22.2m	22.2m	22.2m
Max. outreach* at:			
80kg	12.5m	12.5m	12.5m
120kg	11.2m	11.3m	11.3m
200kg	9.0m	8.9m	8.9m
220kg	8.2m	8.3m	8.3m
Max. basket capacity	220kg	220kg	220kg
GVW	3500kg	3500kg	5200kg
Max. slope	1° / 1°	1° / 1°	1° / 1°
Payload (after driver, passenger and fuel)**	Circa 15kg	Circa 15kg	Circa 1300kg

Standard equipment

- Easy to use full proportional (FPC) CANbus controls with display
- Articulated boom
- Extendable H-frame outriggers to rear
- Emergency hand pump
- Two person walk-in aluminium basket (front mounted flat bottomed)
- 220kg SWL basket
- Outreach load sensing system
- Home function
- Euro 6 compliance
- Designed to work up to 3.0m below ground level

Optional equipment

- GRP bucket (reduces outreach)
- Bespoke locker design (5T vehicles only)
- Full R&M contract available direct from the manufacturer

Key features



Low travel height



Ability to access below ground



The ability to work over rooftops to access difficult to reach areas is aided by a flat bottomed basket

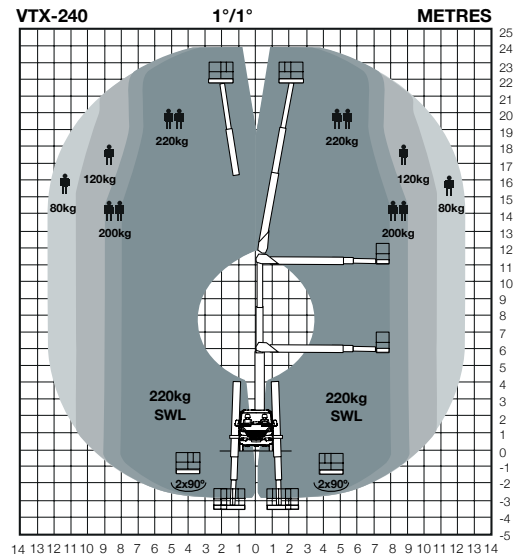


Compact H-frame outriggers



Available on 3.5T GWV Mercedes Sprinter and 3.5T and 5.2T Iveco Daily

Diagrams



Working envelope at 80/120/200/220kg bucket SWL



Easy to use full proportional (FPC) CANbus controls with display

Notes

Technical information is subject to change without notice. Images may show optional equipment.

*Depending on the vehicle and subject to options fitted

**Max. payload after driver, passenger and fuel and subject to options fitted

The photographs in this brochure are for promotional purposes only. Specifications are subject to change without notice.

Revision: 01/2019