

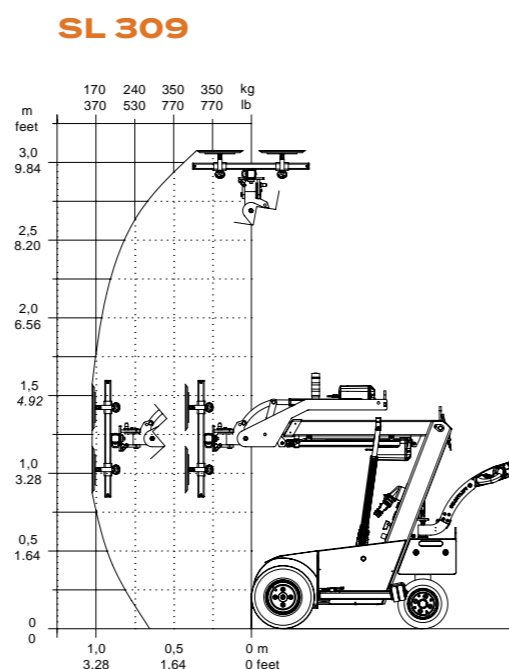
# OUTDOOR MACHINES TECHNICAL INFORMATION

|                      | Lifting capacity arm in/out | Lifting height | Extension of arm | Tip from horizontal  | Turning radius | Suction pads | L x W x H          | Curb weight |
|----------------------|-----------------------------|----------------|------------------|----------------------|----------------|--------------|--------------------|-------------|
| <b>SL 309</b>        | 350 / 170 kg                | 307 cm         | 60 cm            | 35° back<br>135° fwd | 112 cm         | 4 x ø30 cm   | 169 x 82 x 141 cm  | 620 kg      |
| <b>SL 409</b>        | 430 / 200 kg                | 310 cm         | 60 cm            | 53° back<br>131° fwd | 147 cm         | 4 x ø30 cm   | 250 x 82 x 139 cm  | 700 kg      |
| <b>SL 409 HL</b>     | 430 / 100 kg                | 365 cm         | 60 + 60 cm       | 53° back<br>131° fwd | 147 cm         | 4 x ø30 cm   | 260 x 82 x 140 cm  | 710 kg      |
| <b>SL 409 HLE</b>    | 430 / 100 kg                | 365 cm         | 60 + 60 cm       | 53° back<br>131° fwd | 147 cm         | 4 x ø30 cm   | 259 x 82 x 143 cm  | 720 kg      |
| <b>SL 409 HLE RT</b> | 430 / 100 kg                | 365 cm         | 60 + 60 cm       | 35° back<br>106° fwd | 147 cm         | 4 x ø30 cm   | 259 x 82 x 143 cm  | 730 kg      |
| <b>SL 609 HL</b>     | 600 / 170 kg                | 415 cm         | 70 + 90 cm       | 36° back<br>98° fwd  | 161 cm         | 4 x ø40 cm   | 279 x 83 x 151 cm  | 930 kg      |
| <b>SL 609 HLE</b>    | 600 / 170 kg                | 415 cm         | 70 + 90 cm       | 36° back<br>98° fwd  | 161 cm         | 4 x ø40 cm   | 279 x 83 x 154 cm  | 940 kg      |
| <b>SL 609 HLE RT</b> | 600 / 150 kg                | 425 cm         | 70 + 90 cm       | 32° back<br>83° fwd  | 161 cm         | 4 x ø40 cm   | 290 x 83 x 154 cm  | 950 kg      |
| <b>SL 809</b>        | 800 / 90 kg                 | 600 cm         | 128 + 128 cm     | 44° back<br>80° fwd  | 210 cm         | 6 x ø40 cm   | 308 x 102 x 164 cm | 1510 kg     |
| <b>SL 1009</b>       | 1000 / 280 kg               | 465 cm         | 83 + 83 cm       | 44° back<br>80° fwd  | 210 cm         | 6 x ø40 cm   | 332 x 102 x 157 cm | 1480 kg     |

■ All outdoor machines have front wheel drive, electro-magnetic brake, and up to 10 hours operation when fully charged.

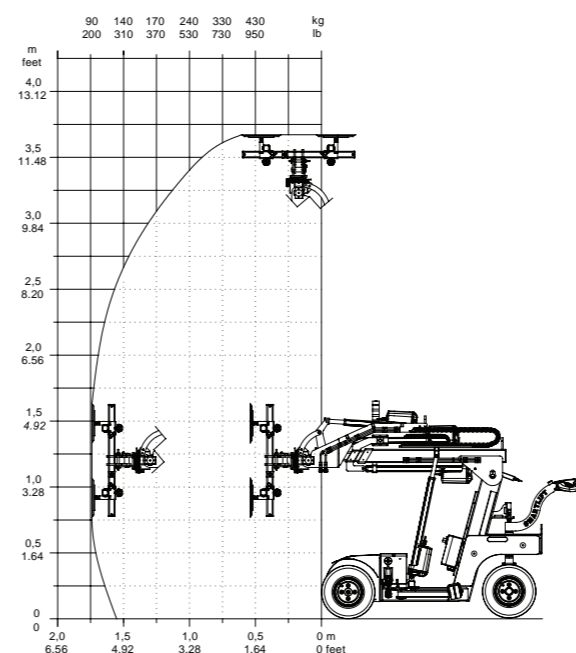
## MACHINE TYPES

- **HL - High Lifter**  
The machine has two extensions of the arm. The first extension is operated with the remote control. The second arm extension must be extended manually. The yoke is rotated manually.
- **HLE - High Lifter Electric**  
The machine has two extensions of the arm. Both extensions are operated with the remote control. The yoke is rotated manually.
- **HLE RT - High Lifter Electric Rotating Yoke**  
The machine has two extensions of the arm. Both extensions are operated with the remote control. The yoke is rotated with the remote control.

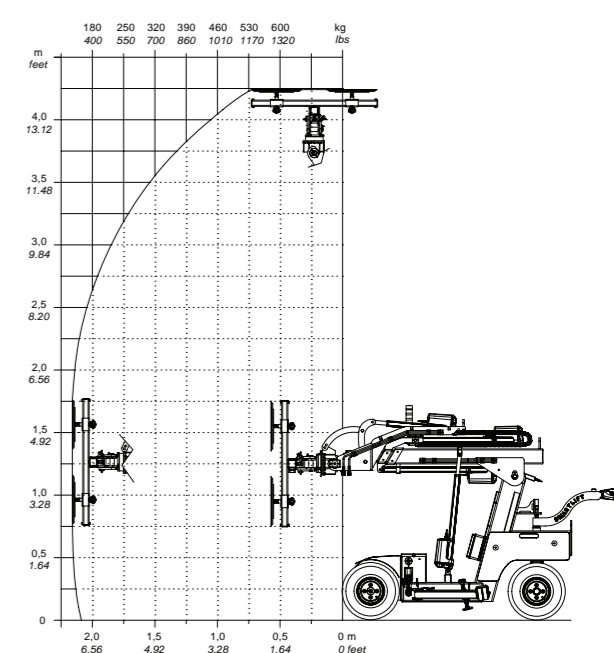


# OUTDOOR MACHINES LOAD CHARTS

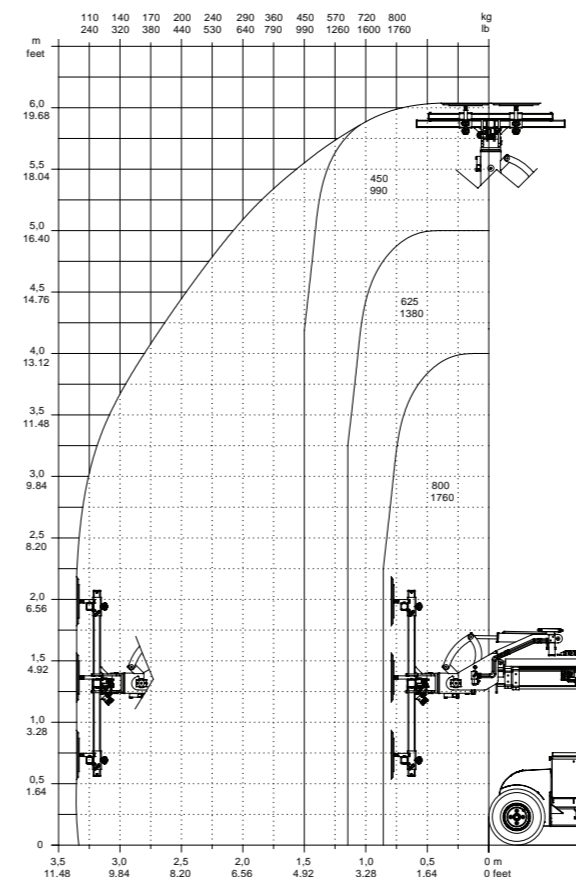
## SL 409 HLE RT



## SL 609 HLE RT



## SL 809



## SL 1009

